

Features



- *Composition
*PES 100%
- *Weight (gr/m2)
*330 gr/m2
- * Size (m)
*57 m



Especificaciones

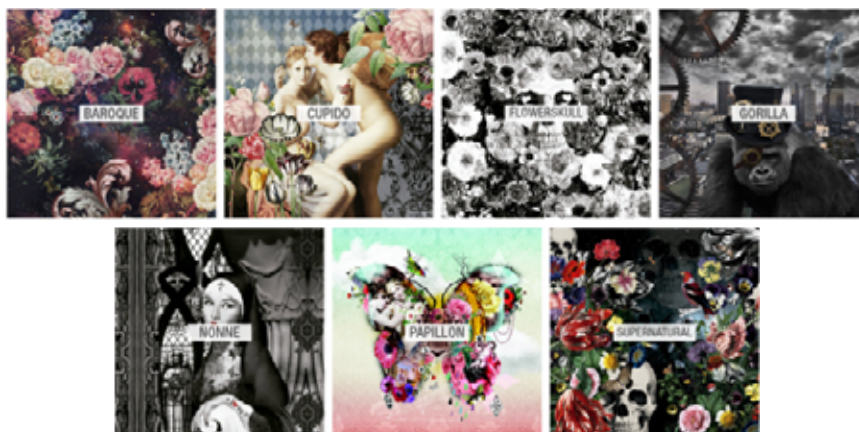
- Abrasion resistance:**
 - UNE EN ISO 12947
 - >40.000 cycles
- Pilling Resistance:**
 - ISO DIS 12945-2
 - 5 | No pilling
- Fire Retardant:**
 - UNE EN 1021:2006-1
 - BS 5852-1
- Shrinking:**
 - UNE EN ISO 5077
 - Warp | 0,6%
 - Weave | 0,8%
- Wash Fastness:**
 - ISO 105 - C06
 - 5 | Good
- Colour fastness dry friction:**
 - ISO 105 - X12
 - 5 | Excelent
- Colour fastness to light:**
 - ISO 105 - B02
 - 5 | Good
- Seam displacement:**
 - UNE EN ISO 13936 - 1
 - Warp | 1,6
 - Weave | 2

Cleaning

- Machine-washable (max. 40C)
- Do not use bleach
- Can be tumble dried
- Dry wash
- Iron



Colours



LA LIGNE 29 is made by COMERSAN in Spain.



FAMA SOFAS S.L.U.
C/ Dr. Jiménez Díaz s/n - P.O.Box 41
30510 YECLA (Murcia) SPAIN
Telf: 968751050 / info@fama.es / www.fama.es